

VIVOTEK

A Delta Group Company



INSIGHT Series Brochure

Enabling Domain Expert Created
Apps for any Camera





INSIGHT Series

Empowering AI on Surveillance Systems

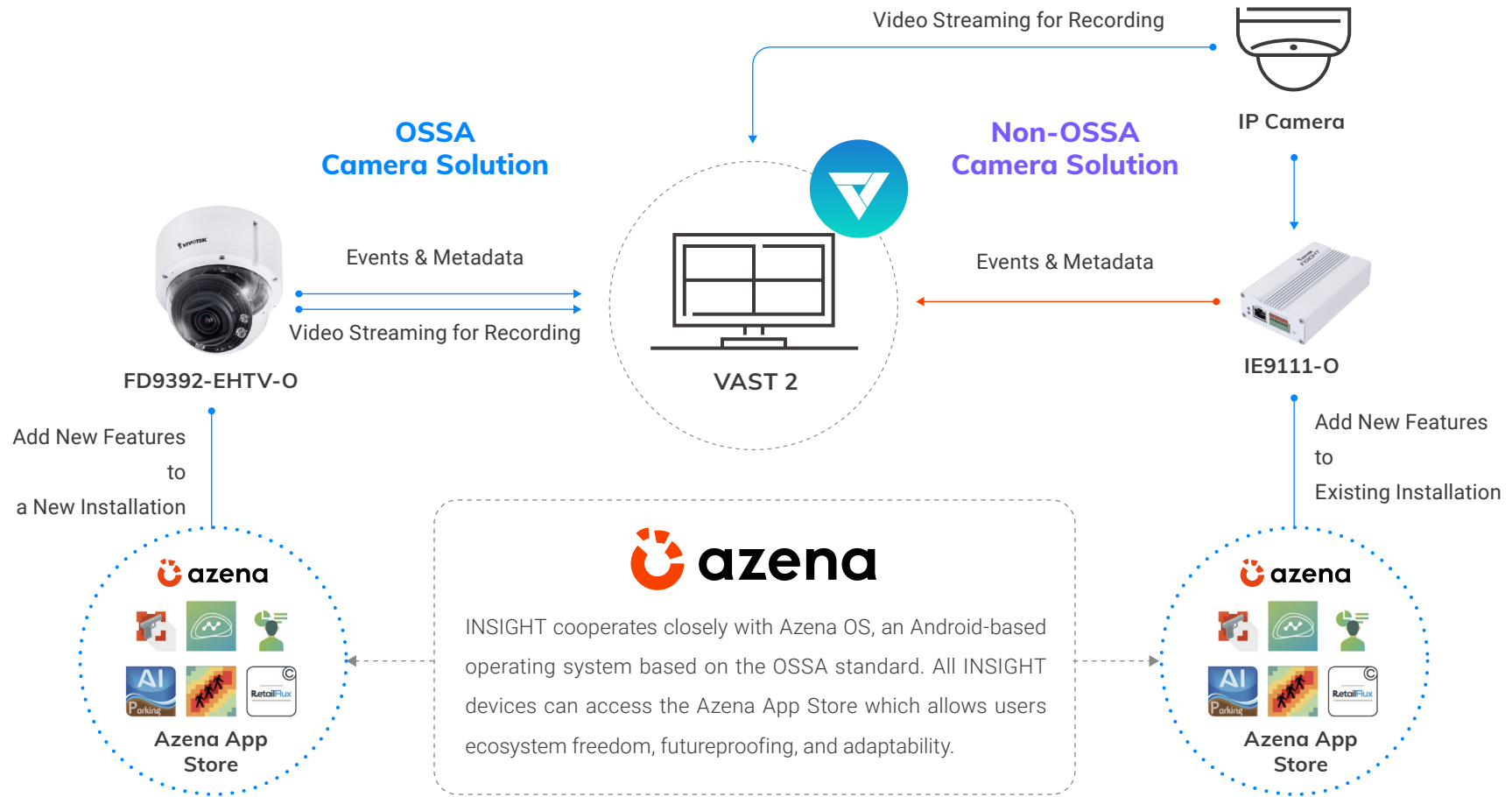
VIVOTEK's INSIGHT series provides solutions driven by domain experts by leveraging OSSA®, which allows apps to be easily created, maintained, and updated for the security industry. Working closely with developers, the INSIGHT series represents the future of implementing an open platform into physical surveillance products, enabling system integrators, software and users to enable security cameras to deliver actionable insights.



INSIGHT products use the Technology Stack for video security devices as set forth by the Open Security & Safety Alliance. OSSA®, founded by VIVOTEK and 4 other leading companies in the IP surveillance industry, is a collaboration initiative created for providing standards and specifications for common components including operating system, IoT infrastructure, collective approach for data security and privacy, and a drive for improved levels of performance for security and safety solutions.



Upgrade your Network Cameras to AIoT Devices





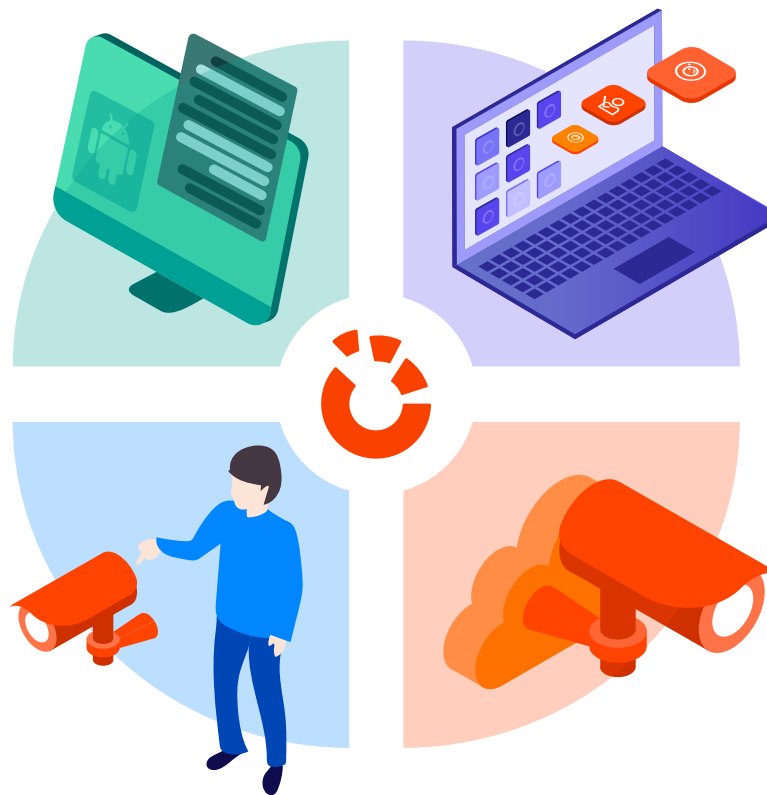
Common Operating System

INSIGHT products all run Azena's Android based OS, providing apps that have been tailored by domain experts



How it Works

Available free trial of all apps. Quickly and simply install the apps you need on any INSIGHT product, even running multiple apps in parallel



App Store

One place to find just the app you need and install within minutes. Apps to help retailers improve store layout. Apps to improve traffic flow. Apps to streamline airport crowd flow and many more.



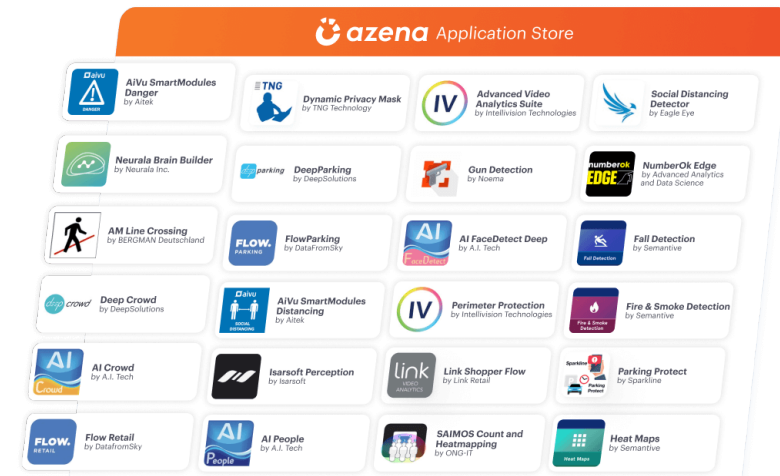
Secure

It starts from the ground up with an OS that has community collaboration on updates, penetration tests, and application scans for malicious software as well as legal screenings of developer companies.

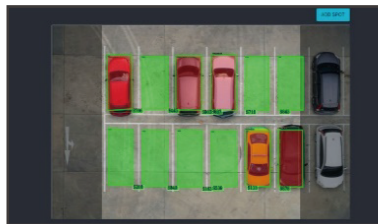


The Place for Smart AI Software for Security Cameras

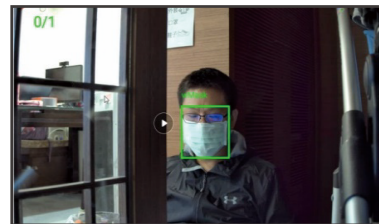
- ▶ 100+ Apps Available
- ▶ From 30+ Development Companies
- ▶ 30+ Use Cases
- ▶ 25+ Industries



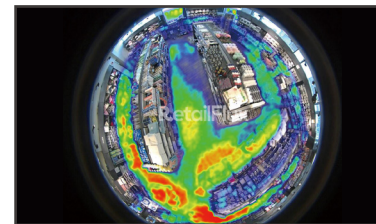
Applications



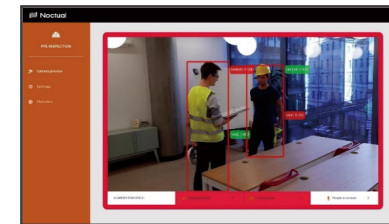
Parking Management
by DeepSolutions



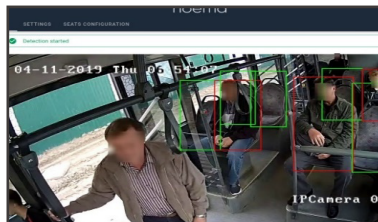
Face Mask Detection
by SenseTime International (Taiwan)



Retail (Counting / Heatmap)
by Link Retail



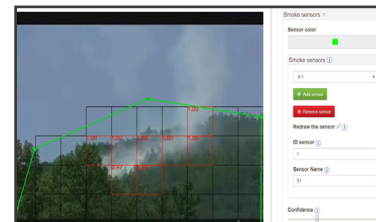
PPE Inspection
by Noctuai



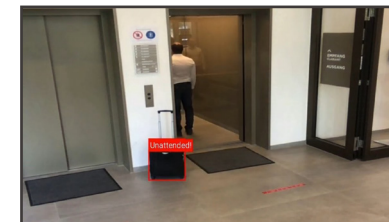
Seat-Occupancy Detection
by A.I. Tech srl



Gun Detection
by Noema



Fire and Smoke Detection
by Noctuai Sp. z o. o.



Unattended Baggage
by TNG Technology Consulting GmbH

AI-Box



Model	IE9111-O	IE9111-O (M12)
Short Highlight	Driven by OSSA, Azena OS, Edge AI, VCA	Driven by OSSA, Azena OS, Edge AI, VCA, M12 Connector, EN50155
Decoding	H.264/H.265: 60 fps @ 3840 x 2160 (4K)	H.264/H.265: 60 fps @ 3840 x 2160 (4K)
Channel	1-CH Video Source / 4-CH RTSP Streaming	1-CH Video Source / 4-CH RTSP Streaming
AI Engine	Qualcomm® Neural Processing SDK, ONNX, Android NN, Caffe, 2.1 TOPS @ 1w, Caffe2, Tensorflow	Qualcomm® Neural Processing SDK, ONNX, Android NN, Caffe, 2.1 TOPS @ 1w, Caffe2, Tensorflow
VCA	Supported by Azena APPs	Supported by Azena APPs
Embedded App	INSIGHT Event Adapter	INSIGHT Event Adapter
Interface	RJ-45	M12 (D-code 4 pin)
Networking	10/100/1000 Mbps Ethernet	10/100 Mbps Ethernet
Power Input	IEEE 802.3af Class3 PoE	IEEE 802.3af Class3 PoE
Power Consumption	Max. 12 W	Max. 12 W
Digital Input /Output	2 / 2	2 / 2
Dimensions	123 x 74 x 30 mm	123 x 74 x 30 mm
Weight	230g	230g
Operating Temperature	-25°C ~ 55 °C (-13°F ~ 131°F)	-25°C ~ 55 °C (-13°F ~ 131°F)
NDAA Compliance Product	●	●

* All specifications are subject to change without notice.

8MP Fixed Dome



NEW

Model	FD9392-EHTV-O	FE9392-HV-O
Camera Features		
Sensor Type	1/1.8" Progressive CMOS	1/2.3" Progressive CMOS
Lens Type/ Focal Length/ F-number	Motorized/ 3.9 ~ 10 mm / F1.5 ~ F2.7	Fixed / 1.18 mm / F2.2
Field of View	119° ~ 45° (H) 63° ~ 25° (V)	180° (H) 180° (V)
Day/Night	●	●
IR Illuminators	50 m, IR LED*5	15 m, IR LED*4
Min. Illumination	0.28 lux @ F1.5 (Color) 0.005 lux @ F1.5 (B/W) 0 lux with IR illumination on	TBD
Max. Resolution/ Frame Rate	30 fps @ 3840x2160	30 fps @ 2816x2816
WDR Technology*	WDR Pro	WDR Pro
On-board Storage	microSD/SDHC/SDXC card slot	microSD/SDHC/SDXC card slot
Video/ Audio/ Network		
Video Compression	Dual-Codec (H.265/H.264)	Dual-Codec (H.265/H.264)
Audio	-	Two-way Audio (Full duplex)
Digital Input/ Output	1/1	1/1
ONVIF	Supports Device Discovery	Supports Device Discovery
Solution Integration		
VIVOCLOUD	-	-
Security	Secure boot	Secure boot
VCA	Supported by Azena APPs	Supported by Azena APPs
General		
Power Input/ consumption	AC 24V/ DC 12V/ PoE Max. 25 W	DC 12V/ PoE Max. TBD
Housing	IP66, IP67, IK10, NEMA 4X	IP66, IK10, NEMA 4X
Dimensions	ø 155 x 138 mm	ø 150 x 68 mm
Operating Temperature	-50°C ~ 60°C (-58°F ~ 140°F)	-25°C ~ 50°C (-13°F ~ 122°F)
NDA Compliance Product	●	●



www.vivotek.es



TECNOLOGÍA INTELIGENTE

LSB, S.L. Distribuidor oficial de Vivotek

C/ Enero, 11. 28022 Madrid Tel: 91 329 48 35 e-mail: info@lsb.es